



ABOUT

ELIS™ is a frameless exit sign designed for architectural interiors. The fixture is ideal for environments where superior aesthetics, illumination, and graphic performance are required.

CONSTRUCTION

- Precision cast dimensional acrylic letters press-fit to a continuous molded back plate. Letters float visually with no background.
- Letters are 6" high with 3/4" stroke.
- Bracket and back plate assembly available in 2 finishes (RAL 9016 White and RAL 7021 Black).
- Chevron Right, Chevron Left, or Dual Chevron directional indicator available for all fixtures. Chevron must be specified upon ordering and may not be added later.

POWER SOURCE

- The INTEGRAL power source locates all electronics directly in the wall or ceiling adjacent to the sign which mounts directly to the face plate at the electrical box. The sign, power source, battery, battery-test button and LED indicators are located together. The sign and the power source are mounted to a .25" thick face plate which fastens to a trim ring and electrical box (see "ROUGH IN" below). The electrical box and trim ring must be installed prior to adjacent ceiling or wall finishes.
- This exit sign is not rated for exterior use.

ROUGH IN

- INTEGRAL installation requires use of *Crouse-Hinds* 3-gang electrical box (# TP871), trim ring (# TP653), and ground screws (# TP711) provided by others. *See details on Pages 2 for locations.*

LEDs / OPTICS

- Energy-efficient compact LEDs provide bright, uniform illumination.
- LEDs and lenses are available in RED or GREEN. Consult local code for compliance requirements. In order to maintain compliance with UL design standards, green exit signs may not be mounted adjacent to green surfaces and red exit signs may not be mounted adjacent to red surfaces.

Specifier's Reference

Project Name _____

Project Location _____

Model No. _____

Quantity _____



ELECTRONICS

- Dual voltage input 120/277 VAC, 60Hz, 4w max.
- Maintenance free, sealed lithium ion battery provides a minimum of 90 minutes of emergency run time with 24 hour recharge.

UL LISTED

- Listed in the U.S. and Canada by Underwriter Laboratories (UL 924).
- NFPA 101 compliant (Life Safety Code).
- Designed and Made in Houston, Texas.



WARRANTY

- 5 year limited warranty on fixture and battery.

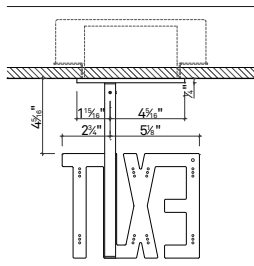
Fixtures and systems shown here subject to pending patent applications.

ORDERING INFORMATION & OPTIONS

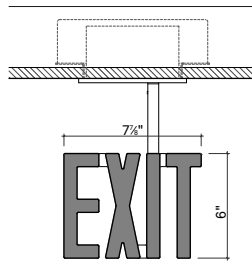
Single Face (circle one)		Example: Single Face INT / Top-NC / Red-B / BB			
_____	_____	_____	_____	_____	_____
POWER SOURCE *	MOUNTING	CHEVRON	COLOR	FINISH	BACK-UP POWER
INT INTEGRAL <i>* See details on Pages 2</i>	Top Ceiling Mount Back Wall Mount	NC No Chevron CR Chevron Right CL Chevron Left DC Dual Chevron	Red Red Grn Green	W White B Black	BB Battery Back-up 2C Dual Circuit (blank) No Battery



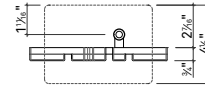
INTEGRAL (INT) / TOP MOUNT (Top) – NO CHEVRON (NC)



Back View

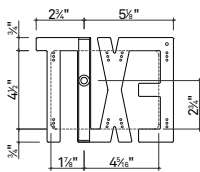


Front View

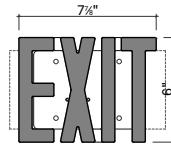


Top View

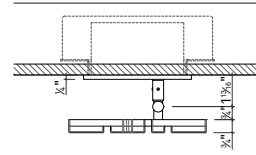
INTEGRAL (INT) / BACK MOUNT (Back) – NO CHEVRON (NC)



Back View



Front View



Top View